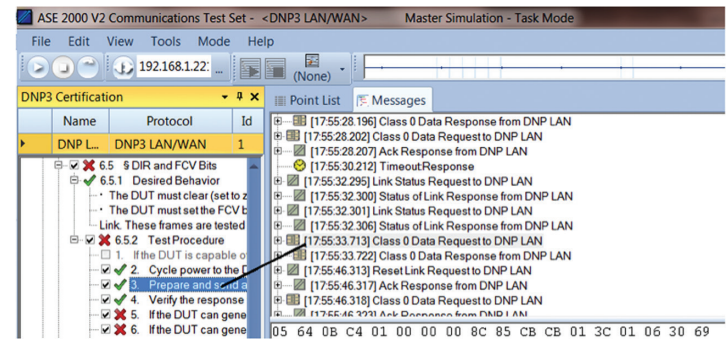


ASE2000

VERSION 2 Communication Test Set



THE EVOLUTION IN PROTOCOL ANALYSIS...

ASE2000 Version 2 is the latest in ASE's line of Communication Test Sets first introduced in 1989. It provides communication analysis, test, and simulation for over 70 serial and network SCADA protocols. Custom communication hardware provides enhanced RS-232 communication and timing capabilities.

Significant ASE2000 V2 Software Features

- Master simulation, remote simulation, and line monitoring capabilities
- Messages displayed in English and raw data
- Points displayed in engineering units and raw values
- Task functional support tailored to each protocol for data acquisition, control, time synchronization, file transfer, and more
- Log of critical system events such as point alarms, communication errors, and key messages
- Low level plot of RS-232 signals from custom hardware
- Communication messages saved to disk. Free message viewer available so others can analyze your communication sessions
- RTU simulation run-time modification of data values
- Control over forced error conditions for comprehensive testing
- Enhanced communication message query and search capabilities
- Communication Statistics
- Comprehensive online help

Extra features for DNP3

- Outstation conformance testing. Report suitable for submission to DNP Users Group
- Secure Authentication version 2 and 5
- File transfer
- Unsolicited and solicited operations

Other major protocols

- IEC 60870-5-101, 103, 104
- Conitel 2020, 2025, 300, 3000
- CDC Types 1 and 2
- RP570
- Harris 5000/6000
- Telegyr 8979
- Modbus
- Spa Bus
- 60+ Others

EXPEDITE PROBLEM SOLVING

Simplify problem reporting and analysis between vendors and users by transferring communication data via capture files. A **free** capture file viewer is available so ASE2000 customers can send capture files to anyone to view and analyze. Please visit our website for more details.

ASE2000 Hardware Options:

- ASE2000-COM works with **standard COM ports** and network adaptors
- ASE2000-USB-RS adds a dual-serial channel USB box with enhanced RS-232 signal handling, embedded high precision timer, and support for legacy bit protocols
- ASE2000-USB-M adds a dual-channel Bell-202/ V.23 modem to the ASE2000-USB-RS model

Available Free of Charge:

- Capture file viewer. ASE2000 customers can send capture files to anyone to view and analyze. Simplifies problem reporting and analysis between vendors and users
- Trial version can be downloaded from our website at <http://www.ase-systems.com> under the Downloads tab

The screenshot displays the ASE2000 software interface with several key components:

- Tasks Panel (Left):** Lists tasks such as "Acquire Static Data", "Analog Static Scan", "Binary Static Scan", "Frozen Static Counter Scan", and "Binary Static Counter Scan". A red box highlights "User Selectable Communication Tasks, Tailored to Each Protocol".
- Line Monitor (Center):** Shows real-time data capture for "Class 1/2/3/0 Data Request" and "Data Response". It includes fields for "Data Link Header", "User Data", "Transport Header", and "Application Data". A red box highlights "Raw and Interpreted Data".
- Point List (Bottom Center):** A table showing captured data points. A red box highlights "Point Values, Alarm States, Quality Codes, and Time Stamps".
- Messages Panel (Right):** Displays a detailed tree view of captured messages, including "Application Data", "Control Ctx", "Indications", "Binary Input", and "Analog Input". A red box highlights "Detailed Visual Presentation of Expandable Message Fields".

At the bottom, a status bar shows summary statistics: Total 28, 11 OK, 28 11 No Rsp, 16 Line Err, 0 0 Sec Err, 0 0.